



# ZERO BEAT

Southeastern Massachusetts  
Amateur Radio Association, Inc.  
54 Donald Street  
South Dartmouth, MA 02748



Since 1932

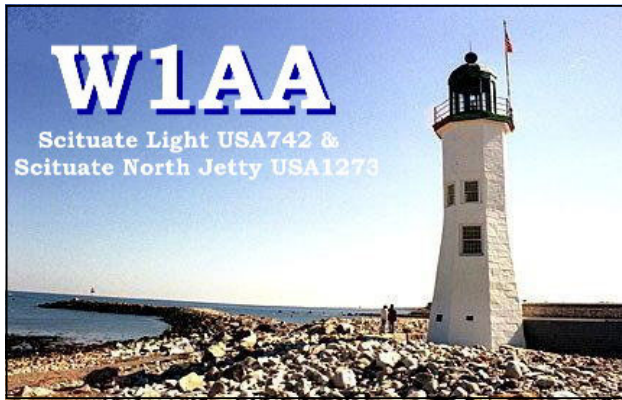
Volume 44 Issue 9

SEMARA-W1AEC

September 2008

## W1AA Activations

### NATIONAL LIGHTHOUSE- LIGHTSHIP WEEKEND



AUGUST 2, 2008

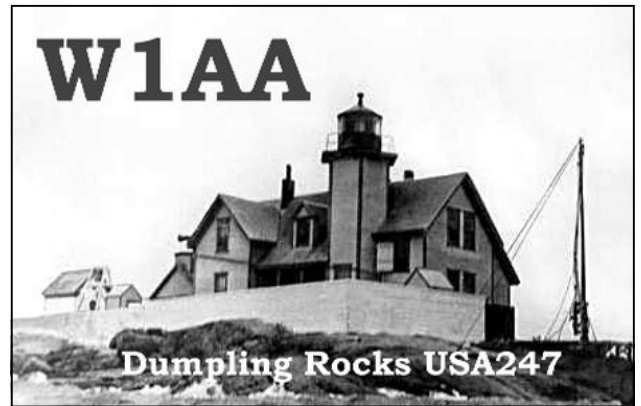
**S**cituate Light, USA742, and Scituate North Jetty, USA1273, was activated by Henry, K1WCC and Whitey, K1VV as W1AA.

K1VV planned to run K1WCC's station simultaneously and cover two bands. "We have bandpass filters, but we may not be able to run both stations that close to each other."



HENRY, K1WCC ON 20 METER PHONE

### INTERNATIONAL LIGHTHOUSE LIGHTSHIP WEEKEND



AUGUST 16, 2008

**D**umpling Rock Light, USA247, was activated by Don, N1DT – back for a one time activation – and Whitey, K1VV as W1AA.

Operation was from Whitey's silver 2007 Toyota Tacoma pickup with a 33 ft mast on the back of the truck. Power is supplied by a small generator.



DON, N1DT WORKING CW

(Continued on page 5)

## ZERO BEAT

Published online monthly  
 ©2008 Southeastern Massachusetts  
 Amateur Radio Association, Inc.  
 54 Donald Street,  
 South Dartmouth, MA 02748  
 (508) 997-7070

**EDITOR** Bob Kelley - K1KVV

*E-mail:* editor@semara.org

**SEMARA:** <http://www.semara.org>

*E-mail:* clubinfo@semara.org

### 2008 SEMARA OFFICERS

#### *President*

Louis Mester - W1CH

#### *Vice President*

Bob Kelley - K1KVV

#### *Secretary*

Tim Smith - N1TI

#### *Treasurer*

Mike McDonald - KB1NB

#### **Board of Directors:**

Gerry Bergeron - W1AFD

Dave Dean - K1JGV

Dave Goldstein - W1DJG

#### **Trustees: (year term is up)**

Larry Houbre, Jr. - AA1FS (2008)-Ch

Mike Miller - N1ITQ (2009)

Charlie Days - WA1JFD (2010)

Tim Smith - N1TI (2011)

Henry Blanchett - W1GYL (2012)

### STANDING COMMITTEES

#### *Building and Grounds*

Marty Jordan - KA1YFV

#### *Scholarship*

Larry Houbre, Jr. - AA1FS

#### *Technical*

Dave Goldstein - W1DJG

### SPECIAL COMMITTEES

#### *Activities*

Scott Szala - W1EV

#### *ARES/SKYWARN*

Rob Macedo - KD1CY

#### *Building Renovation*

Dave Dean - K1JGV

#### *QSL Manager*

John Nery - WA1ESO

#### *Radio Events*

Bob Kelley - K1KVV

#### *Repeater*

Rick Cabral- W1RJC,

Dave Goldstein - W1DJG

#### *Website*

Tim Smith - N1TI



## It seems to me ...

de Bob - K1KVV <editor@semara.org>

Last month I had expressed my opinion that SEMARA had turned the corner on the oil spill cleanup and was on a new track. Well! Here are some excerpts from some of conversations overhead in the clubhouse. Just which track are we now on?

1. "work all week, so don't expect me to do ANYTHING here at the club."
2. "I would rather not promise anything then I won't let anyone down."
3. "Pay someone to do it!"
4. "I have not been feeling well lately."
5. "If I do anything, someone will criticize it."

While these comments do not represent the attitudes of all SEMARA members, it is disappointing that there are a few who have made these remarks. Let me comment on these by number:

No. 1 is likely at the club to escape from the 'Honey Do List' of chores at home and is seeking refuge at SEMARA. The sad thing is No. 1 is spreading negative vibes around and could influence others to adopt the same, superficial excuse for relaxing at the clubhouse. Do you think he got on the air this past weekend?

No. 2 doesn't want to make a commitment. (Is he married?). Perhaps he should look around, see what needs to be done and just do it! I'll bet he'd be surprised how good it'll make him feel.

No. 3 is living in a dream world. Or perhaps he will make an anonymous donation to the SEMARA treasury? Does he donate to the "Coffee Pot?"

No. 4 is saying nothing new. So what is he really saying? Perhaps

*(Continued on page 6)*

## POINT TO PONDER

**"Flexible people never get bent out of shape."**

~Anonymous

## HAMMIN' AROUND

**Question\* G5B15** What is the output PEP of an unmodulated carrier if an average reading wattmeter connected to the transmitter output indicates 1060 watts?

- A. 530 watts
- B. 1060 watts
- C. 1500 watts
- D. 2120 watts

\*2007 Element 3 General Class Question Pool (good thru 2011-06-30) Answer on page 6



# CLUB NOTES

September is the month when we try to deny that summer is nearly over and have lots of outdoor events to hold us through the colder times ahead.

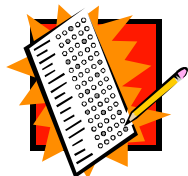
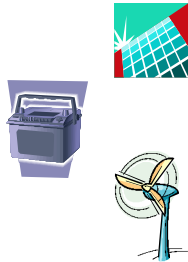
It is a good time to try your hand at contesting. There are several four hour duration "sprints" this month. If you are interested in digital modes, there are two RTTY and two PSK sprints/contests. Most of the contests are all mode - with phone operation being more popular than CW and digital modes.

Have you ever thought about running your station off the grid? Solar powered charged battery packs off an easy first step. A little more expensive route is to use wind power. A combination of both would supply power day and night, in wind and calm.

No applications for life membership were received for the August 7, 2008 business meeting:

This is my monthly plea for upgrading all SEMARA members to Extra Class. We can do it one step at a time. Let's do General Classes, too. And while I'm at it, let's actively recruit new hams and offer a Technician licensing class.

The next VE exam session is scheduled for October 4, 2008. Anyone who really needs to take an exam before then, check for a VE session near you on page 7. See the website <http://www.arrl.org/arrlvec/examsearch.phtml>.



## LOCAL NET ACTIVITY

Everybody, check in to these local nets!

**147.000+ (PL 67.0 Hz) (FM) — Roundtable "Camel" Net** is held *every evening* at 7 p.m. on the SEMARA Repeater, **WIAEC**.

**50.200 MHz (USB) — Net** is held *Wednesdays* at 8:30 p.m. **Bob, N1HCW** (Acushnet) is net control.

**28.490 MHz (USB) — Net** is held *Tuesdays* at 8:30 p.m. **Bob, N1HCW** (Acushnet) is net control.

**3868 kHz (LSB) — SEMARA Morning Net** is held *weekdays* from 7:30-8 a.m. ET.

## NEXT SEMARA VE SESSION

Saturday, Oct 4, 2008  
10:30 a.m.

Contact: Larry, AA1FS  
[LRHguy@earthlink.net](mailto:LRHguy@earthlink.net)  
508-991-6055



## SUDOKU

Here's a challenging puzzle to attack while waiting for the net to start. **Solution is on page 6.**

				8	4	7		
8		6						
						1	2	
6	9	7						
			4	9	3			
4	8					5		1
			9	3	2	4		
5		2						
		4	6		8	2		7

# Meeting Minutes

## AUGUST 7, 2008

The business meeting was called to order at 7:08 p.m. by Vice President **Bob, K1KVV**. The salute to the flag was followed by a roll call. A quorum of 22 members was present.

**Secretary's Report** was accepted as published in the August 2008 *Zero Beat* newsletter.

**Treasurer's Report: Mike, KB1NB** reports that the club treasury balance is \$8,223 (combined checking and savings). Total income last month was \$61.53. Income is usually higher with the Netcom payment but unfortunately their last check was returned due to non-sufficient funds. Good news was that a new bank check was received to make up for last month and the upcoming month, bringing anticipated income of \$2,510 (last month) + \$10 (returned check fee) + \$2,510 current month for a total of \$5,030. Two expenses were reported: \$3,000 for the attorney retainer and \$12,775 to New England Disposal Technology for the soil removal. An anticipated additional \$500 was expected to be spent to remove two contaminated barrels. On a positive note, Mike also reported that a check was received for \$3,709 as an overage refund. This brought the net for the soil and barrel removal down to \$9,066. The original estimate from Frank Corp. was \$17,000 which proved that the Licensed Site Professional expenses were more than justified. Additional income from donut donations of \$30. Current net worth is \$8,223 prior to Netcom's current and overdue payments. *Discussion:* **Charlie, WA1JDF** inquired about tax relief due our recent catastrophic loss. This will be referred to our tax accountant. A refer to audit *motion* passed.

### Standing Committee Reports

**Building and Grounds: Marty, WA1YFV** reported that he had cleaned and swept the club recently. Marty mentioned that he was unable to contact our current lawn care contractor. **Dave, K1JGV** appealed to the membership seeking volunteers or to investigate alternate means. **Larry, W1DBX** offered his appreciation to **Dave, K1JGV** for his past service in taking care of the lawn. **Dave, W1DJG** offered a motion to formally terminate the current lawn care agreement between member **Mike, N1ITQ** and SEMARA. This *motion* passed unanimously. A motion was offered by **Dave, W1DJG** to have **Marty, WA1YFV** begin recruiting a new lawn care service which also passed unanimously.

**Repeater/Technical Committee: Dave, W1DJG** reported that Echo/IRLP and APRS services went down last Sunday due to possible storms over the weekend. **Tim, N1TI** visited the site on Monday to reset the 10/100 Ethernet switch in the repeater site. Dave also mentioned that he has been trying to locate the cyclic noise issue that has plagued the repeater on weak signals. Dave is going to try and round up test equipment to try and isolate it. *Not directly related to the Technical Committee discussion, Tim, N1TI and Mike, KB1NB both reminded members to be sure appliances, radios, fans, etc. are turned off (even if the last person to leave has not used these items). There have been recent incidents of these items being left on as well as windows being left open.* **Tim, N1TI** reported that the former main club computer has been rebuilt with a fresh installation of Windows XP Service Pack 3 and accessory applications. All is needed is to load radio applications and interfacing to the club station.

### Special Committee Reports

**Activities: Bob, K1KVV** mentioned that we should be conscience of post-activity responsibilities. There have been instances of dirty dishes be left unwashed, coffee left in the de-

canter and other cleanup tasks that are being left behind.

**ARES/Skywarn: Joe, N1IXC** reported there several check-ins at the New Bedford EMA for the statewide Hurricane drill and the nets went smoothly.

**Radio Events: Bob, K1KVV** reported that on August 16th & 17th is the International Lighthouse/Lighthouse Weekend. Refer to August *Zero Beat* for details. Discussion regarding display of member and contact QSL cards in the club. Also discussed were designing and printing by a few member volunteers.

**Website: Tim, N1TI** reported routine updates.

**Old Business** A letter of resignation from **Chris, K1CJS** was sent to the club secretary and to the membership by way of the SEMARA discussion reflector. Since this had been sent to the membership previously, August 7, 2008 asked for a motion to waive reading of entire resignation. This *motion* passed unanimously. **Dave, W1DJG** offered a *motion* to accept the resignation from **Chris, K1CJS** which passed unanimously.

**For the Good of the Club Matt, KB1OSV** will be traveling to the Canadian Maritimes from August 22 to September 1 and will be operating portable/mobile. (A copy of his radio expedition schedule is part of this report). Contact him at [kb1osv@comcast.net](mailto:kb1osv@comcast.net) to schedule a contact.

**Tim, N1TI** donated two oscillating floor fans to the club. **Ed, WA1ZCB** encouraged organizing special groups to operate the club station or to go out on radio special outings. He reminded us that we have a lot of great assets to use. **Tim, N1TI** offered an observation that SEMARA is turning a corner where we have more discussion and focus on radio activities. He also reminded the meeting that elections are coming soon and to give some thoughts as to running for office. **Matt, KB1OSV** inquired about wanting to learn how to operate the club station safely. A discussion on ideas of developing a tutorial by the technical committee. **Bob, K1KVV** referred to his recent editorial about us being more proactive in getting people (especially youth) involved in the hobby and the club. Refer to the August 2008 *Zero Beat*.

**Chuck, KB1FRL** offered observation that he had heard some of the best comments at this meeting that he has in quite some time. **Henry, W1GYL** inquired as to the whereabouts of the Power-Pole harness that was used for attaching club member radios to the club power supply. **Dave, W1DJG** said that this was borrowed for testing down at the club site and will be returned. **Tim, N1TI** recognized **Stan, KB1KSF**, who now lives out of state but was here at this meeting.

A final tally of attendance just prior to adjournment was 23 members.

A *motion* to adjourn passed unanimously at 8:05 p.m.

Respectfully submitted,  
**Tim Smith, N1TI**  
Secretary



The 50/50 raffle was held after the meeting adjourned. **Joe, N1IXC** served as the 50/50 raffle chairman and sold a total of \$65 worth. The winner of the \$32.50 prize was **Louie, W1CH**.

# SEMARA Soundings

## FROM THE WEBSITE



**SEMARA MEMBER BEN, N1WBV STAFFS THE AMSAT BOOTH AT BOXBORO.**

**R**umor has it that Ben has agreed to give a Tech Talk soon on AMSAT and satellite communications. Stay tuned for the announcement.



**ROB, KD1CY DELIVERS HIS SKYWARN TALK AT THE BOXBORO HAMVENTION ON SATURDAY, AUGUST 23, TO A FULL HOUSE.**

**T**hanks to Tim, N1TI for these photos he posted on the website.

**A**nd more kudos for reinstating the Tech Talks. They have been sorely missed.

*(Continued from page 1)*



**WHITEY, K1VV OPERATING AS W1AA.**



**PI, K1RV ON 40 SSB AND CW**



**PI, K1RV TALKING TO VISITORS**

The DX Summit, <http://www.dxsummit.fi/DxSpots.aspx>, was spotting W1AA as usual.

# More SEMARA News

## SCONTICUT NECK TOWERS MYSTERY REVEALED



PHOTO BY JOE, WIJFI

If you've ever driven down Sconticut Neck Road in Fairhaven and wondered what the 4 antenna towers to the east, off of Indian Way, were all about, you need wonder no more. They belong to **Greg Cronin, W1KM**, of Marstons Mills, Mass. Greg used to live on Sconticut Neck but moved to the Cape when he got married in 1983.

By that time the towers were up so in 1986. a little "radio shack" was built near the towers to house the radio equipment. The station is used by Greg and some of his friends for various activities, mostly contests. They have been very active in ARRL CW DX contests.

The station is most active in the fall and winter months. Greg reports that the best antenna down there is the 4-square vertical array for 80 meters that is located down in the marsh.

Some of you might recognize Greg's name and/or call as he was a member of SEMARA back in 1979.

So now you know the story.

73 de *Joe, WIJFI*

B. PEP is the *average* power during one RF cycle of a modulation peak of the transmitted waveform. Unmodulated peak power is the same its average power.

*(It seems to me... continued from page 2)*

his comment should have been in the positive - "I can't climb a ladder, but I can steady it."

No. 5 is suffering from a lack of self confidence too. Yes, there have been times - I've witnessed them myself - when "experts" elect to be critics instead of mentors. Perhaps he should just go ahead and do it!

These comments came from able bodied individuals. They seem to express the attitude that the club is there for them, but they don't have to lift a finger to guaranty it! We need to turn this around. We are talking about doing simple chores that are part of a well functioning group. Let's begin by picking up after ourselves. And, how about the check list of projects from last month? Which of these might be completed this fall?

- Securing and routing "rat's nest" of coax behind the club.
- Completing the shingling of the north clubhouse wall.
- Landscaping the garden areas in the front of the clubhouse.
- Painting the trim on the clubhouse.
- Moving the BBQ pit to improve the parking.
- Grading of grounds to permit installation of handicap ramp behind the building.
- Minor carpentry repairs to building.



Future projects might include:

- Handicap rest rooms.
- Replace roofing shingles.

9	1	4	6	5	8	2	3	7
5	3	2	1	4	7	6	8	9
7	6	8	9	3	2	4	1	5
4	8	3	2	7	6	5	9	1
2	5	1	4	9	3	8	7	6
6	9	7	8	1	5	3	4	2
3	4	5	7	6	9	1	2	8
8	7	6	3	2	1	9	5	4
1	2	9	5	8	4	7	6	3

## VE SESSIONS

*Walk-ins permitted unless otherwise noted.*

<http://www.arrl.org/arrlvec/examsearch.phtml>

**SEMARA – 10:30AM Oct 4th**

**Larry Houbre-AA1FS**

[LRHguy@earthlink.net](mailto:LRHguy@earthlink.net)

**508-991-6055**

**Braintree, MA – 8:45AM Sep 13th**

**William Needham-K1WN**

[K1WN@aol.com](mailto:K1WN@aol.com)

**781-843-4000**

**Canton, MA – 7:30PM Sep 18th**

**Lou Harris-N1UEC**

[N1UEC@Norwood-ARC.org](mailto:N1UEC@Norwood-ARC.org)

**508-668-0858**

**Cranston, RI – 9:00AM Sep 27th**

**Ken Carr-KB1AWV**

[KB1AWV@arrl.net](mailto:KB1AWV@arrl.net)

**401-828-1665**

**Fall River, MA – 7:00PM Sep 15th**

**Skip Denault-KB1CNB**

[skip@NewTestamentSchool.org](mailto:skip@NewTestamentSchool.org)

**774-644-3469**

**Falmouth, MA – 9:00AM Sep 13th**

**Ben Fleck-W2LYE**

[BenFleck@cape.com](mailto:BenFleck@cape.com)

**508-540-2583**

**Middletown, RI – 9:00AM Sep 27th**

**Jack Garforth-K1IG**

[K1IG@verizon.net](mailto:K1IG@verizon.net)

**401-683-2250**

**Providence, RI – 7:00PM Sep 11th**

**Lou Mester-W1CH**

[W1CH@cox.net](mailto:W1CH@cox.net)

**401-263-6045**

**W. Tisbury – 7:00PM Sep 28th**

**Karen Collins-WA1ZPA**

**508-627-5533**

## SEPT FLEA/HAMFESTS

<http://www.arrl.org/hamfests.html>

- |  |                       |
|--|-----------------------|
| <b>6 Windsor Hamfest</b>                 | <b>Winsor, ME</b>     |
| Augusta ARA                              | Bill – 207-623-9075   |
| <b>14 W. CT Hamfest</b>                  | <b>Newtown, CT</b>    |
| Candlewood ARA                           | Joe – 203-938+4880    |
| <b>20 St. Croix Valley ARA 'Fest</b>     | <b>Alexander, ME</b>  |
| St. Croix Valley ARA                     | Mike – 207-427-3058   |
| <b>20 Annual Fall Flea &amp; Auction</b> | <b>Forestdale, RI</b> |
| RI Am. FM Rptr. Service                  | Rick – 401-64-9611    |
| <b>21 Flea @ MIT</b>                     | <b>Cambridge, MA</b>  |
|  | Nick – 617-253-3776   |

## SOME SEPT CONTESTS

<http://www.arrl.org/contests/>

### SPRINTS

- 1 Sep 2300Z - 2 Sep 0300Z : Labor Day Sprint :**  
CW : [www.gsl.net/migrpclub](http://www.gsl.net/migrpclub)
- 7 Sep 0000Z - 7 Sep 0400Z : North American Sprint :** CW : [www.ncjweb.com](http://www.ncjweb.com)
- 12 Sep 8PM - 13 Sep 2AM : 070 Club 80 meter Autumn Sprint :** PSK : [www.podxs070.com](http://www.podxs070.com)
- 14 Sep 0000Z - 14 Sep 0400Z : North American Sprint :** SSB : [www.ncjweb.com](http://www.ncjweb.com)
- 22 Sep 7PM - 22 Sep 11PM : Fall VHF Sprint :**  
**144 All Mode :** [www.svhfs.org](http://www.svhfs.org)
- 30 Sep 7PM - 30 Sep 11PM : Fall VHF Sprint :**  
**222 All Mode :** [www.svhfs.org](http://www.svhfs.org)
- 30 Sep 0000Z - 30 Sep 0400Z : Fall QRP Home-brewer Sprint :** CW : [www.njqr.org](http://www.njqr.org)

### SSB

- 6 Sep 1300Z - 7 Sep 2400Z : IARU Region 1 Field Day :** SSB : [www.sk3bg.se/contest/iarur1fd.htm](http://www.sk3bg.se/contest/iarur1fd.htm)
- 13 Sep 0000Z - 14 Sep 2400Z : WAE DX Contest :** SSB : [waedc.de](http://waedc.de)
- 21 Sep 1300Z - 22 Sep 0700Z : Classic Exchange :** SSB : [gsl.asti.com/CX/sept08announcement.html](http://gsl.asti.com/CX/sept08announcement.html)
- 27 Sep 1200Z - 28 Sep 1200Z : Scandinavian Activity Contest :** SSB : [www.sk3bg.se/contest/sacnsc.htm](http://www.sk3bg.se/contest/sacnsc.htm)

# SEMARA HandiHam Affiliate

Southeastern Massachusetts Amateur Radio Association, Inc., 54 Donald Street, South Dartmouth, MA 02748

## LOCAL REPEATER DIRECTORY

See <http://www.semara.org/repeaters.htm>

Frequency	CTCSS	Call	Location
144			
145.110 -	67.0	KB1BWN	New Bedford
145.130 -	151.4	WF1A	W Greenwich, RI
145.150 -	123.0	WA1DGW	Fall River
145.450 -	100.0	W1SYE	Portsmouth, RI
145.490 -	67.0 <sup>1</sup>	W1SMA	Fairhaven
146.655 -	88.5	WA1GPO	Falmouth
146.685 -	82.5	N1ZIZ	Plymouth
146.700 -		K1CR	Cranston, RI
146.730 -	67.0	W1SGL	Sandwich
146.760 -		W1HQV	Scituate, RI
146.805 -	67.0	NN1D	Fall River
146.835 -	192.8	WA1QCA	Johnston, RI
146.880 -	100.0	WC1R	Newport, RI
146.940 -		K1KYI	Lincoln, RI
146.955 -	88.5	K1PBO	Dennis
147.000+ SEMARA	67.0*	W1AEC	<b>Dartmouth</b>
147.045+	141.3	W1HDN	W Warwick, RI
147.120+	173.8	K1WEW	Portsmouth, RI
147.135+	67.0	KA1GG	Taunton
147.165+	67.0	WA1HAH	Exeter, RI
147.180+	67.0	W1MV	Bridgewater
147.195+	127.3	K1SMH	Attleboro
147.315+	67.0	WG1U	Plymouth
147.330+	131.8 <sup>2</sup>	W1AQ	E Prov., RI
147.345+	88.5	KB1QL	W Tisbury
147.375+	110.9	N1YHS	Falmouth

\* IRLP-4347 & EchoLink-44347

<sup>1</sup>IRLP-4617 & EchoLink-4611; <sup>2</sup>173.8 required to use IRLP-4907

222			
223.760 -		K1KYI	Scituate, RI
223.780 -	88.5	N1PYN	Brockton
223.820 -	67.0	N1JBC	Newport, RI
223.900 -		KA1ABI	Coventry, RI
223.920 -		KA1LMX	Warwick, RI
223.960 -	127.3	KA1RCI	Johnston, RI
223.980 -		W1OP	Johnston, RI
224.040 -	67.0	KA1RCI	Lincoln, RI
224.060 -	103.5	N1ZZN	Norwell
224.200 -	100.0	KA1MYV	Lincoln, RI
224.320 -	118.8	W1ZSA	Walpole
224.400 -	103.5	N1KUG	Quincy
224.560 -	100.0	KA1NXS	Exeter, RI
224.620 -	88.5	N1TVZ	Attleboro
224.660 -		W1KG	Medway
224.760 -		KA1SOO	W Warwick, RI
224.920 -	67.0	N1JBC	N Prov., RI
224.960 -	88.5	W1VET	Warwick, RI

440 (within 25 miles of SEMARA)			
441.400+	192.8	WG1U	Assonet
441.750+	192.8	W1AQ	E Prov., RI
442.550+	67.0	WG1U	Assonet
443.150+	94.8	K1CW	Bristol, RI
444.350+	88.5	W1ACT	Fall River
446.375 -	67.0	KA1RCI	Little Compton, RI
447.225 -	88.5	WP4US	Taunton
447.525 -	88.5	WA1TAQ	Portsmouth, RI
448.325 -	186.2	KC2GDF	Newport, RI
449.525 -		NN1D	Fall River

Check <http://www.nerepeaters.com/se.htm#440>

GPS Coordinates:  
Lat. N 41° 36.795' Long. W 070° 56.550'

Grid Coordinates: FN41mo



FISTS CW no.10555

## MOST-OF-THE-TIME ACITIVITIES

**BUSINESS MEETING: 7 PM FIRST THURSDAYS**

**RAGCHEW AT THE CLUBHOUSE: 7-11 AM SUN**

**\*EARLY BIRD BREAKFAST: 6 AM TU & TH**

*West End Grill*

1000 Rockdale Avenue, New Bedford

**\*CLUB COFFEE MEET: 1 PM WEEKDAYS**

*Boston Coffee & Bagel*

122 Allen Street (corner of Dartmouth Street)  
New Bedford

**LUNCHEON: 11:30 AM FRIDAYS**

**Meet at the clubhouse at 11:15 AM** to decide which local restaurant is to have the honor of our presence that week.

\* Call first on repeater to see who's coming

## Directions to SEMARA

