



# ZERO BEAT

Southeastern Massachusetts  
Amateur Radio Association, Inc.  
54 Donald Street  
South Dartmouth, MA 02748



Since 1932

Volume 44 Issue 4

SEMARA-W1AEC

April 2008

## SEMARA Pictures

### GETTING THERE



**CURRENT LOOK OF THE REAR OF THE CLUBHOUSE - GROUND HAS BEEN LEVELED AND CINDER BLOCK FURNACE BUILDING RAZED.**



**MINI-ALPS - WHAT'S LEFT FROM EXCAVATING THE MATERIAL FROM THE OIL SPILL.**

### WBZ-4 TOUR



**THE TOUR GUIDE, DAN BROWN, W1DAN, SOME OF THE SEMARA GROUP.** W1DJG photo



**THE ENTIRE TOUR GROUP.** W1DJG photo



**WHAT'S BEHIND THESE DOORS? THE KLYSTRONS WERE TOO BUSY TO BE SEEN (RF-WISE).**

Courtesy WA1LSH

*(Continued on page 7)*

## ZERO BEAT

Published online monthly  
 ©2008 Southeastern Massachusetts  
 Amateur Radio Association, Inc.  
 54 Donald Street,  
 South Dartmouth, MA 02748  
 (508) 997-7070

**SEMARA:** <http://www.semara.org>  
*E-mail:* [clubinfo@semara.org](mailto:clubinfo@semara.org)  
**EDITOR** Bob Kelley - K1KVV  
*E-Mail:* [editor@semara.org](mailto:editor@semara.org)

### 2007 SEMARA OFFICERS

#### *President*

Louis Mester - W1CH

#### *Vice President*

Bob Kelley - K1KVV

#### *Secretary*

Tim Smith - N1TI

#### *Treasurer*

Mike McDonald - KB1NB

#### **Board of Directors:**

Gerry Bergeron - W1AFD

Dave Dean - K1JGV

Dave Goldstein - W1DJG

#### **Trustees: (year term is up)**

Larry Houbre, Jr. - AA1FS (2008)-Ch

Mike Miller - N1ITQ (2009)

Charlie Days - WA1JFD (2010)

Tim Smith - N1TI (2011)

Henry Blanchett - W1GYL (2012)

### STANDING COMMITTEES

#### *Building and Grounds*

Mike Miller - N1ITQ

#### *Scholarship*

Larry Houbre, Jr. - AA1FS

#### *Technical*

Dave Goldstein - W1DJG

### SPECIAL COMMITTEES

#### *Activities*

Scott Szala - W1EV

#### *ARES/SKYWARN*

Rob Macedo - KD1CY

#### *New Building/Renovation*

Dave Dean - K1JGV

#### *QSL Manager*

John Nery - WA1ESO

#### *Radio Events*

Bob Kelley - K1KVV

#### *Repeater*

Rick Cabral- W1RJC,

Dave Goldstein - W1DJG

#### *Website*

Tim Smith - N1TI



## It seems to me ...

de Bob - K1KVV <[editor@semara.org](mailto:editor@semara.org)>

That SEMARA is lucky to have such dedicated people supporting the club and it's functioning. For example, recently the repeater froze up. The problem was that the IRLP computer froze holding the carrier open on the repeater for roughly 14 hours. (For IRLP status, see <http://status.irlp.net/IRLPnodedetail.php?nodeid=4347>) Because the repeater has a 3 minute timeout, the repeater timed out and it had been that way since that morning.

Rick W1RJC, shut off the IRLP/EchoLink port so the repeater would reset from the time-out state. He stopped by the site to reset the computer so that the node comes back up. "Thanks to John, WA1LSH, for sending an email." If he hadn't, Rick wouldn't have known the repeater was off the air. In the future, members who notice problems are encouraged to email Dave, W1DJG, or Rick.

FYI – A firmware upgrade will stop this from happening in the future. It will make it so that if IRLP gets stuck, as it did this time (which is extremely rare), only the link port will time-out, keeping the local repeater port still operational.

Well, it's that time of the year again - time to think about Field Day. As has been done in the past, Bill Ricker, N1VUX, will be handling the Field Day preparation and the gathering of the Field Day site information for the EMA Section so all hams (and the section leadership officials) will know which club is doing what-and where.

What are the details? Who wants to take charge of this fun events? Can we show the public what fun it is to operate during 'emergency' conditions? After all, according to the FCC, this is the *Amateur Radio Service*.

We need to send Bill an e-mail at [n1vux@arrl.net](mailto:n1vux@arrl.net) with our plans for this year's Field Day weekend ASAP. You can find the 2008 Field Day package on the ARRL website, at

<http://www.arrl.org/contests/announcements/fd/>.

Chris, K1CJS, in his role as EMA Section Club Coordinator, would appreciate knowing the details also.

## HAMMIN' AROUND

**Question\* T3B08** Which of the bands available to Technician class licenses have mode restricted sub-bands?

- A. The 6-meter, 2-meter, and 70-centimeter bands
- B. The 2-meter and 13-centimeter bands
- C. The 6-meter, 2-meter, and 1 1/4-meter bands
- D. The 2-meter and 70-centimeter bands

\*2006 Element 2 Technician Class Question Pool (good thru 2010-06-30) Answer on page 8



# CLUB NOTES

**A**pril is a good time to check out your antennas, feedlines, and the proximity of tree branches and bushes. Be sure to check the condition of the traps on your multi-banders, too. Seems that some hams with indoor installations had discovered hot-spots that were caught just before there was a fire. The traps showed evidence of arcing. Remember, RF voltage can get to be quite high, especially at points away from the low-impedance feed point. Note, 100 watts into a 50 ohm center-fed dipole corresponds to about 70.7 volts; feeding a 5000 ohm end-fed dipole results in about 707 volts!

Your feedback to [editor@semara.org](mailto:editor@semara.org) is always welcomed.

### POINT TO PONDER

**“Thank God men cannot fly, and lay waste the sky as well as the earth.”**

*~Henry David Thoreau*

**N**o applications for life membership were received at the March 6, 2008 business meeting.

**N**o VE examinations were given at the March 1, 2008 session.

The schedule for the rest of 2008 follows:

- April 5
- May 3
- June - September: by appointment only
- October 4
- December 6

### NEXT SEMARA VE SESSION

Saturday, April 5, 2008

10:30 a.m.

Contact: Larry, AA1FS  
[LRHguy@earthlink.net](mailto:LRHguy@earthlink.net)  
 508-991-6055



### LOCAL NET ACTIVITY

*Everybody, check in to these local nets!*



**147.000+** (PL 67.0 Hz) (FM) — **Roundtable “Camel” Net** is held *every evening* at 7 p.m. on the SEMARA Repeater, WIAEC.

**50.200 MHz (USB)** — Net is held *Wednesdays* at 8:30 p.m. **Bob, N1HCW** (Acushnet) is net control.

**28.490 MHz (USB)** — Net is held *Tuesdays* at 8:30 p.m. **Bob, N1HCW** (Acushnet) is net control.

**3868 kHz (LSB)** — SEMARA Morning Net is held *weekdays* from 7:30-8 a.m. ET.



**3547 kHz (CW)** — **Southern New England “SNE” Net** on *Mondays* at 8:00 p.m. Code speed is 10-15 wpm, or slower as needed. **Don, WA1BXY** is net control. *Show interest! Check-in.*

### SUDOKU

**H**ere’s something to keep you entertained while waiting for the net to start. **Solution is on page 6.**

			5					
				3		4		7
3	8	9						
6	4	5						
	1						8	6
			1	7		9		
	3	4						
				1	2		7	
				5	4			8

# Meeting Minutes

## March 2008 Business Meeting

The March 6, 2008 business meeting was called to order at 7:00 p.m. by the vice-president **Bob, K1KVV**. The salute to the flag was followed by a roll call. A quorum of 26 members was present.

**Secretary's Report** was accepted as published in the March 2008 *Zero Beat* newsletter.

**Treasurer's Report (Mike, KB1NB)**: Total funds available in the checking account is \$51,058. This balance is expected to substantially less due primarily to the cleanup costs. Mike reports that lots of progress has been made relative to the cleanup and with the tower site conditions. The hut debris, boiler room and junk pile has been removed and the excavation hole has been filled. Additional discussion relative to the cleanup and the Licensed Site Professional's list of milestones.

A refer to audit motion passed unanimously.

## Standing Committee Reports

**Building and Grounds (Mike, N1ITQ)**: Mike reported that everything has been going good despite ongoing personal issues.

**Technical Committee (Dave, W1DJG)**: Repeater has the new ID's with the Greg Jenson voiceovers from WBZ. A lot of effort by **W1RJG** and **W1DJG** went into programming the system in the freezing cold.

The battery backup shack was moved and elevated on concrete blocks by **K1JGV**.

## Special Committee Reports

**Ares/Skywarn: Rob, KD1CY** announced that there will be an Emergency Communications Workshop in the Walpole EOC (Town Hall) on April 12 from 9AM until 4PM.

Rob thanks those that help during recent Skywarn activations. Rob said he will be able to attend the next business meeting due to his involvement at the National Hurricane Center meetings.

**Building/Renovation (Dave, K1JGV)**: Research continues on handicap access ramps. A ramp out front may look like the one at "Me and Ed's" due to the turnarounds. A "Me and Ed's" ramp is estimated at \$3K while a poured concrete ramp would cost \$2K and a moveable modular ramp would cost approximately \$1K.

**Website (Tim, N1TI)**: No major changes. Routine updates. New VEC schedule from AAIFS published.

**Events (Bob, K1KVV)**: In the last *Zero Beat*, Bob offered to assist in any contesting or events or simply wants to get some airtime on the station can arrange it with him. Bob also offered to help those unfamiliar with the SEMARA shack

## Communications (Bob, K1KVV):

Bob submitted three new membership applications for ratification: **Robert, N1SVR**; **Ben, N1WVB**; and **Matt, KB1OSV**. A motion to accept these new members passed unanimously.

## Old Business

Discussion regarding the membership roster by **Charlie, WA1JFD** with an offer to update and revise the database. **Tim, N1TI** to supply Charlie the files. **Tim, N1TI** asked that someone assist in getting a list of cleaning supplies for the club so that they can be purchased.

## New Business

**Mike, KB1NB** moved to reimburse **Bob, K1KVV** the cost of a replacement ink cartridge used in publishing the *Zero Beat* and related SEMARA documentation. Passed unanimously.

**Charlie, WA1JFD** to look into the cost of a mercury vapor lamp at the driveway.

## For the Good of the Club:

**K1JGV** asked for volunteers to help repair the shingling on the north side of the club in addition to a few volunteers that have already signed up. See either **K1JGV** or sign up on the white board at the front of the club.

## Adjournment:

A motion to adjourn which passed unanimously at 8:15 p.m.

Respectfully submitted,

**Tim Smith, N1TI**

Secretary



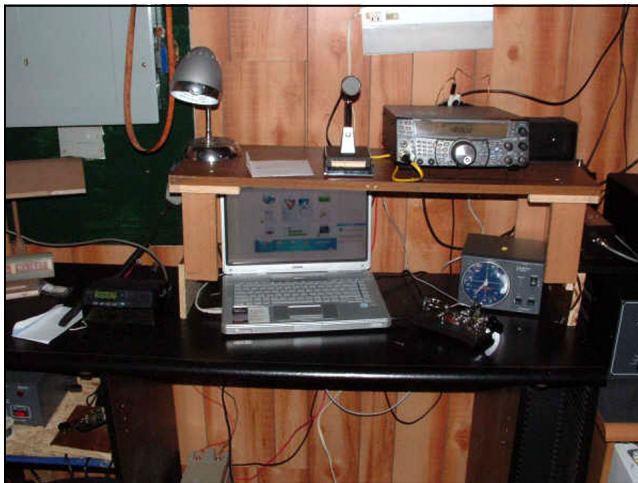
# SEMARA NEWS

## WA1BXY'S STATION



WA1BXY photo

FT 2000 with an AUDIO TECHNICA ATR-20 mike, BENCHER BY-2 paddles, AMERITRON 811H amplifier, PALSTAR AT1KP tuner, Also hooked to desktop for digital modes. Use a Windom-80 on this rig.



WA1BXY photo

TS 2000 and RADIO SHACK Studio Unidirectional mike on an MC-50 base, a VIBROPLEX bug, a YAESU G-450 rotor box, and laptop hooked into rig for digital modes. This rig is hooked to a rotateable Tribander dipole, and a 5-el 2/440 beam. Also a KENWOOD TM-271A for monitoring 2m and close repeater use. Use an indoor dipole mounted on ceiling joist.

73 de **Don, WA1BXY**

## K1AHA STUFF

Everyone knows that **Dick, K1AHA**, is in the stealth antenna business. (A stealth antenna is one that nobody can see. It prevents the house from looking like a science building at MIT or a NASA control center.) Was his incentive generated by his wife threatening to inflict bodily harm upon him? He has strung up all kinds of verticals and dipoles and a home encircling gutter-loop. ~submitted by *K1JGV*

**D**ick finally bought a new radio and now has a beautiful signal on 6-m. He has also created another of his 'Halliwell designs' for 2-m – a multi-element Moxon. The 4-el Moxon worked but the SWR was about 3:1; the 3-el version works with only 2:1 SWR. Dick's antennas mysteriously work, believe it or not. (With the price of copper coming down, can we look forward to a 'plumber's delight' in the near future?) ~gleaned on the air, *K1KVV*

## POLES



K1KVV photo

**I** bet we could put up a fantastic tent with these utility poles. After the shingling party? ~*K1KVV*

## SNE NET FEEDBACK

**W**ell dr (**Don, WA1BXY**), condx were not gud tonite for me. Every now an then u came up out of the noise and I was able to hr u. Most of the time ur sig was really in the noise, lots of QRN due to thunder storms west of me in the Pan Handle of Florida and coming my way. When ur sig came up out of the noise I was able to hr u and that was great. Tks for letting me into the group. Will look for u agn next Monday. Maybe condx will be better. It was difficult to know when u were calling for QNI, I thought I heard ur CQ and that is when I jumped in.

73 es GN de **Art, W1FJI, Bradfordville, FL**

# More SEMARA News

## ARE YOU A REDNECK HAM?

13 ways to tell if you are a Redneck Ham Operator!!!

1. One leg of your dipole is tied to the outhouse.
2. Needle nose pliers are needed to turn your transceiver on and off.
3. You paid more for your mobile antenna than you did for your wife's wedding ring.
4. You paused for ID every ten minutes while on your honeymoon.
5. Your spouse says, "Honey, do you love me?" And your response is ROGER ROGER ROGER!
6. Your trailer home is part of your antenna.
7. Your mobile radio costs more than the vehicle it's mounted in.
8. Your power supply consists of jumper cables hanging out the window of your shack attached to the battery of your truck.
9. Your HF rig is the latest ICOM or KENWOOD and your Desk Mic came from Radio Shack.
10. Your idea of RF is REAL FINE audio.
11. Your homebrew amplifier resembles a moonshine whiskey still in Alabama.
12. Your TV antenna and 10 Meter Beam are one in the same.
13. You own a linear amplifier but not a lawn mower.

*Courtesy of Ron, WB1HGA*

8	3	2	4	5	9	1	6	7
4	7	6	2	1	3	8	6	5
9	5	1	7	8	6	4	3	2
5	4	6	9	7	1	3	2	8
6	8	3	5	2	4	7	1	9
1	2	7	3	9	8	5	4	6
2	6	5	1	4	7	9	8	3
7	9	4	8	3	2	6	5	1
3	1	8	9	6	5	2	7	4

## TWO SOLAR CYCLES AT ONCE

**W**e're not making this up! It is NOT an April fool's day story, either.

NASA Science News for March 28, 2008 reported evidence of Cycle 23 happening at the same time that 24 has already begun:

"Three months ago, a new solar cycle began. This week, however, the sun surprised onlookers with three big sunspots from the previous solar cycle. Strangely enough, this is perfectly normal."

Find out what's happening on the sun in this story from Science@NASA. Full story at

[http://science.nasa.gov/headlines/y2008/28mar\\_oldecycle.htm?list6529](http://science.nasa.gov/headlines/y2008/28mar_oldecycle.htm?list6529)

*Handiham Weekly E-Letter for 01 April 2008*

## LAPTOP OR RIG TOO HOT?

**Bill, KC4PE**, posted a link to a series of "laptop coolers" < <http://tinyurl.com/2n8dxh> > that sit under the equipment to be cooled. Fans pull air through the equipment into the cooler, where it is, um, cooled. It seems to work well on radios large and small.

*CONTESTER'S RATE SHEET, Ward Silver, N0AX*

## 2008 BOSTON MARATHON

**T**he **Marathon Amateur Radio Communications (MARC)** consortium is looking for ham radio operators to assist at the **2008 Boston Marathon**. The Marathon is held annually on Patriots Day, this year that's **Monday, April 21**. We need people to provide communications in three areas:

**START LINE** (Hopkinton) — Runner & observer safety & security, parking lots, VIP escorts

**COURSE** (Hopkinton to Boston) — First Aid & Water station coordination

**FINISH LINE** (Boston) — First Aid, safety & security

If you are interested in any of these positions, please visit the MARC website to sign up:

<http://marc.amateur-radio.net>

*73, Bob DeMattia - K1IW  
MARC Recruitment Coordinator*

# More WBZ-4 Tour Pictures



TRANSMITTER CONTROL STATION.



COAX SPARES ON THE RACK.  
(USE LADDER FOR SCALE.)



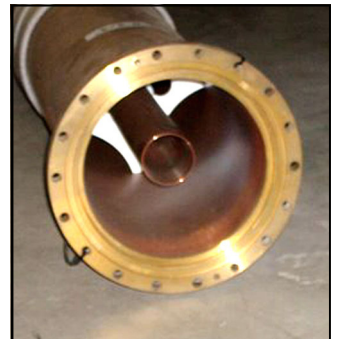
COAX FEEDLINE NETWORK.



HARMONIC FILTERS.



CLOSE-UP - ABOVE.



COAX FEED DETAIL.



SWITCHER PLUMBING.



PARTIAL VIEW OF  
ANTENNA AND  
COAXIAL RF FEED.



COAX CENTER  
CONDUCTORS.

## APRIL VE SESSIONS

*Walk-ins permitted unless otherwise noted.*

<http://www.arrl.org/arrlvec/examsearch.phtml>

- SEMARA — 10:30AM** 5th  
 Larry Houbre-AA1FS  
[LRHguy@earthlink.net](mailto:LRHguy@earthlink.net)  
 508-991-6055
- Braintree, MA — 8:45AM** none  
 William Needham-K1WN  
[K1WN@aol.com](mailto:K1WN@aol.com)  
 781-843-4000
- Canton, MA — 7:30PM** 17th  
 Lou Harris-N1UEC  
[N1UEC@Norwood-ARC.org](mailto:N1UEC@Norwood-ARC.org)  
 508-668-0858
- Cranston, RI — 9:00AM** none  
 Ken Carr-KB1AWV  
[KB1AWV@arrl.net](mailto:KB1AWV@arrl.net)  
 401-828-1665
- Fall River, MA — 7:00PM** 21st  
 Skip Denault-KB1CNB  
[skip@NewTestamentSchool.org](mailto:skip@NewTestamentSchool.org)  
 774-644-3469
- Falmouth, MA — 9:00AM** 12th  
 Ben Fleck-W2LYE  
[BenFleck@cape.com](mailto:BenFleck@cape.com)  
 508-540-2583
- Middletown, RI — 9:00AM** 26th  
 Jack Garforth-K1IG  
[K1IG@verizon.net](mailto:K1IG@verizon.net)  
 401-683-2250
- Providence, RI — 7:00PM** 10th  
 Lou Mester-W1CH  
[W1CH@cox.net](mailto:W1CH@cox.net)  
 401-263-6045
- Slatersville, RI — 9:00AM** none  
 Robert Jones-WB1P  
[WB1P@arrl.net](mailto:WB1P@arrl.net)  
 401-333-4787
- Taunton, MA — 10:00AM** 19th  
 John Miller-N1UMJ  
[N1UMJ@arrl.net](mailto:N1UMJ@arrl.net)  
 508-823-8837

## APRIL NE FLEA MARKETS

<http://www.arrl.org/hamfests.html>

- 4-5 Maine State Convention** Lewiston, ME  
 Androscoggin ARC Bill — 207-782-4862
- 5 IRS Fleamarket** Londonderry, NH  
 Interstate Rptr Soc Nelson — 603-660-6288
- 6 FARA Fleamarket** Framingham, MA  
 Framingham ARA Beverly — 508-626-2012
- 19 Portland Hamfest** S. Portland, ME  
 Portland AW(ireless)A Mike — 207-797-6584
- 20 Flea @ MIT** Cambridge, MA  
 MIT, Harvard et al. Nick — 617-253-3776
- 26 GBRA Annual Hamfest** Rochester, NH  
 Great Bay Radio Assoc Larry — 603-335-4805

## SOME APRIL CONTESTS

<http://www.arrl.org/contests/>

### State/Province OSO Parties

- Montana - Apr 4-6. [www.fvarc.org](http://www.fvarc.org)
- Missouri - Apr 5-6. [www.w0ma.org/mo\\_qso\\_party.htm](http://www.w0ma.org/mo_qso_party.htm)
- GA - Apr 19-20. [gqp.contesting.com](http://gqp.contesting.com)
- Michigan - Apr 19-20. [www.miqp.org](http://www.miqp.org)
- Ontario - Apr 19-20. [cco.ve3xd.com/oqp](http://cco.ve3xd.com/oqp)
- Florida - Apr 26-27. [www.floridagsoparty.org](http://www.floridagsoparty.org)
- Nebraska - Apr 26-27. [www.qsl.net/hdxa](http://www.qsl.net/hdxa)

### DX Contests

- SP - Apr 5-6. [www.contest.spdxc.org/pl/en/index.php](http://www.contest.spdxc.org/pl/en/index.php)
- Yuri Gagarin - Apr 12-13. [www.srr.su](http://www.srr.su)
- YU - Apr 19-20. [yudx.net](http://yudx.net)
- ES - Apr 20. [www.erau.ee/index.php?newlang=eng](http://www.erau.ee/index.php?newlang=eng)
- Helvetica - Apr 26-27. [www.uska.ch/e\\_index.htm](http://www.uska.ch/e_index.htm)

C. The 6-meter, 2-meter, and 1 1/4-meter bands:  
 50.0-50.1 MHz - CW only; 144.0-144.1 MHz - CW  
 only; 219-220 MHz - CW and data only.



# SEMARA HandiHam Affiliate

Southeastern Massachusetts Amateur Radio Association, Inc., 54 Donald Street, South Dartmouth, MA 02748

## LOCAL REPEATER DIRECTORY

See <http://www.semara.org/repeaters.htm>

Frequency	CTCSS	Call	Location
<b>144</b>			
145.110 -	67.0	KB1BWN	New Bedford
145.130 -	151.4	WF1A	W Greenwich, RI
145.150 -	123.0	WA1DGW	Fall River
145.450 -	100.0	W1SYE	Portsmouth, RI
145.490 -	67.0 <sup>1</sup>	W1SMA	Fairhaven
146.655 -	88.5	WA1GPO	Falmouth
146.685 -	82.5	N1ZIZ	Plymouth
146.700 -		K1CR	Cranston, RI
146.730 -	67.0	W1SGL	Sandwich
146.760 -		W1HQV	Scituate, RI
146.805 -	67.0	NN1D	Fall River
146.835 -	192.8	WA1QCA	Johnston, RI
146.880 -	100.0	WC1R	Newport, RI
146.940 -		K1KYI	Lincoln, RI
146.955 -	88.5	K1PBO	Dennis
<b>147.000+</b> SEMARA	<b>67.0*</b>	<b>W1AEC</b>	<b>Dartmouth</b>
147.045+	141.3	W1HDN	W Warwick, RI
147.120+	173.8	K1WEW	Portsmouth, RI
147.135+	67.0	KA1GG	Taunton
147.165+	67.0	WA1HAH	Exeter, RI
147.180+	67.0	W1MV	Bridgewater
147.195+	127.3	K1SMH	Attleboro
147.315+	67.0	WG1U	Plymouth
147.330+	131.8 <sup>2</sup>	W1AQ	E Prov., RI
147.345+	88.5	KB1QL	W Tisbury

\* IRLP-4347 & EchoLink-44347

<sup>1</sup>IRLP-4617 & EchoLink-4611; <sup>2</sup>173.8 required to use IRLP-4907

<b>222</b>			
223.760 -		K1KYI	Scituate, RI
223.780 -	88.5	N1PYN	Brockton
223.820 -	67.0	N1JBC	Newport, RI
223.900 -		KA1ABI	Coventry, RI
223.920 -		KA1LMX	Warwick, RI
223.960 -	127.3	KA1RCI	Johnston, RI
223.980 -		W1OP	Johnston, RI
224.040 -	67.0	KA1RCI	Lincoln, RI
224.060 -	103.5	N1ZZN	Norwell
224.200 -	100.0	KA1MYV	Lincoln, RI
224.320 -	118.8	W1ZSA	Walpole
224.400 -	103.5	N1KUG	Quincy
224.560 -	100.0	KA1NXS	Exeter, RI
224.620 -	88.5	N1TVZ	Attleboro
224.660 -		W1KG	Medway
224.760 -		KA1SOO	W Warwick, RI
224.920 -	67.0	N1JBC	N Prov., RI
224.960 -	88.5	W1VET	Warwick, RI

### 440

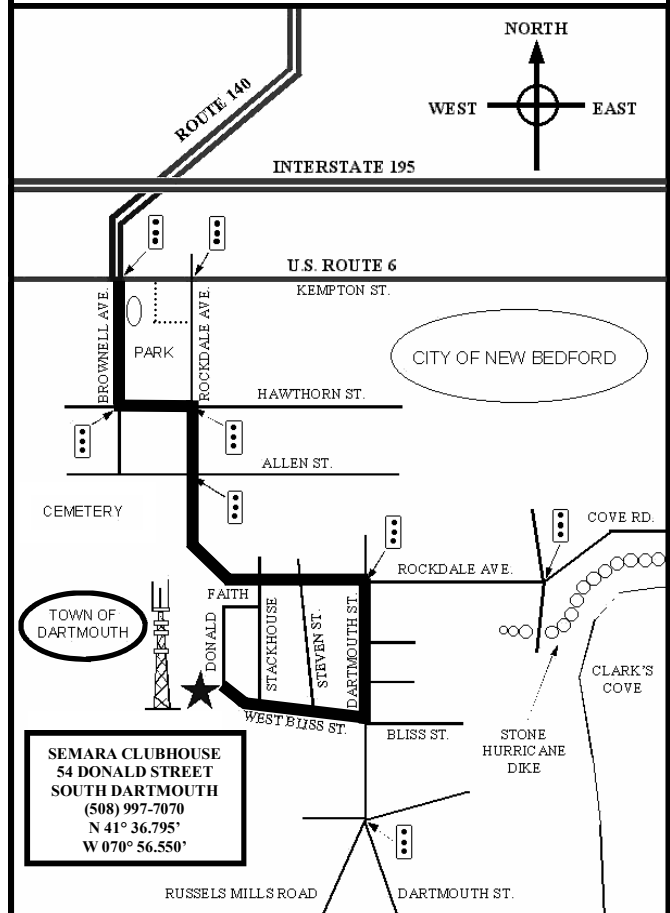
Check <http://www.nerepeaters.com/se.htm#440>

GPS Coordinates:  
Lat. N 41° 36.795' Long. W 070° 56.550'

Grid Coordinates: FN41mo

FISTS CW no.10555

## Directions to SEMARA



**BUSINESS MEETING: 7 PM FIRST THURSDAYS**  
**RAGCHEW AT THE CLUBHOUSE: 7-11 AM SUN**

### — MOST-OF-THE-TIME ACITIVITIES —

**EARLY BIRD BREAKFAST: 6 AM TU & TH**

*West End Grill*

1000 Rockdale Avenue, New Bedford

**CLUB COFFEE MEET: 1 PM WEEKDAYS**

*Boston Coffee & Bagel*

122 Allen Street (corner of Dartmouth Street)  
New Bedford

**LUNCHEON: 11:30 AM FRIDAYS**

**Meet at the clubhouse at 11:15 AM** to decide which local restaurant is to have the honor of our presence that week