



ZERO BEAT

Southeastern Massachusetts
Amateur Radio Association, Inc.
54 Donald Street
South Dartmouth, MA 02748



Volume 43, Issue 6

SEMARA-W1AEC

June 2007

June Club Events

KIDS DAY EVENT

1800Z-2400Z June 16, 2007

Every six months the ARRL sponsors this event to encourage kids (licensed or not) to enjoy Amateur Radio. It gives kids hands-on on-the-air experience. They might even develop an interest in getting a license. It also gives SEMARA a chance to show off our station and clubhouse to the kids.



MARY MACEDO AND MAT MELO
DID KID'S DAY JUNE 2006

Initial exchange: Name, age, location and favorite color. The same station can be worked again if an operator has changed. No limit on operating time. Just call "CQ Kid's Day."

Suggested Frequencies: 28350-28400 kHz, 24960-24980, 21360-21400 kHz, 18140-8145 kHz, 14270-14300 kHz, 7270-7290 kHz, and 3740 & 3940 kHz. 2-meter repeater frequencies with permission from the repeater sponsor. We need to observe third party traffic restrictions if we work DX.

Reporting: Post logs and comments (below).

Awards: All kids are eligible to receive a colorful certificate (it becomes our personalized sales brochure on ham radio). It is downloaded, customized with the kids' names, after we fill out the ARRL Kid's Day Survey at <http://www.arrl.org/FandES/ead/kd-rules.html>.

FIELD DAY

1800Z June 23-2100Z June 24, 2007

Be sure to mark your calendar for the ARRL Field Day event on June 23rd and 24th. We will most likely operate from the clubhouse grounds.



ROB, KD1CY, ENTERS HIS QSO DATA
DIRECTLY INTO THE LOGGING PROGRAM

- FIELD DAY 2006 -

The event begins at 2:00 PM local time Saturday., and we can operate straight through until 2:00 PM on Sunday. Traditionally (for the past few years) we have operated into the late evening on Saturday and have picked up again on Sunday morning.

Perhaps we can do something a little different for 2007. We could bring our own [QRP] rigs and erect our own antennas and — are you ready for this? — operate free of the mains!!!

Of course we can enjoy a fine grill and beverages; but wouldn't it be fun to see how we as a club might meet a real emergency? If we wanted to get serious, there are several things we could do to get some points.

(Continued on page 5)

ZERO BEAT

Published online monthly by the
Southeastern Massachusetts
Amateur Radio Association, Inc.
54 Donald Street,
South Dartmouth, MA 02748
(508) 997-7070

Website: <http://www.semara.org>
E-mail: clubinfo@semara.org

EDITOR Bob Kelley - K1KVV
E-Mail: editor@semara.org

2007 SEMARA OFFICERS

President

Lou Mester - W1CH

Vice President

Bob Kelley - K1KVV

Secretary

Armand Augustine - W1BUG

Treasurer

Mike McDonald - KB1NB

Board of Directors:

Marty Jordan - KA1YFV

Ed Duclos - WA1ZCB

John Carreiro - W1ZYV

Trustees: (year term is up)

Larry Houbre, Jr. - AA1FS (2008)-Ch

Bill Vincent - W1POW (2009)

Dave Dean - K1JGV (2010)

Tim Smith - N1TI (2011)

Ed Duclos - WA1ZCB (appt. 2007)

STANDING COMMITTEES

Building and Grounds

Mike Miller - N1ITQ

Scholarship

Larry Houbre, Jr. - AA1FS

Technical

Dave Goldstein - W1DJG

SPECIAL COMMITTEES

Activities

Scott Szala - W1EV

ARES/SKYWARN

Rob Macedo - KD1CY

New Building

Dave Dean-K1JGV

QSL Manager

John Nery - WA1ESO

Radio Events

Bob Kelley-K1KVV

Repeater

Rick Cabral-W1RJC,

Dave Goldstein-W1DJG

Website

Tim Smith - N1TI



It seems to me ...

de Bob - K1KVV <editor@semara.org>

That we have some talented people in the club. Look at the job done by Wayne, WA1CCM on the new W1AEC sign in front of the clubhouse.



This reminds us all that we are celebrating our 75th year as a club. Let's all honor those who went before us. We are truly standing on their shoulders.

POINT TO PONDER

"You get the best out of others when you give the best of yourself."

~Harry Firestone

HAMMIN' AROUND

Question* G8A10 How should the microphone gain control be adjusted on a single-sideband phone transmitter?

- For full deflection of the ALC meter on modulation peaks
- For slight movement of the ALC meter on modulation peaks
- For 100% frequency deviation on modulation peaks
- For a dip in the plate current

* 2004 General Class (Element 3) Question Pool (good thru 2008-06-30)

Answer on page 7

CLUB NOTES

June is the month for lots of radio activities. Do you know anyone who just made their first Amateur Radio Contact? If so, go to the ARRL First Contact Awards page <http://www.arrl.org/FandES/ead/award/certificate/1contact.html> and just fill in the details. A beautiful certificate will be sent out.



One application for life membership was approved at the May 3, 2007 business meeting:

Donald Rosinha II – WA1BXV
Welcome to the club!



Four candidates successfully passed the General written exam at the VE session on May 5, 2007. They were:

John J. Braz, Jr – N1IQU
Antone D. Duarte, Jr – N1XRS
Carlos A. Matos – NB1NAS
Steve F. Silvestre – K1XTB
Job well done!



Enjoy your new privileges!

SEMARA VE SESSION
 Saturday, June 2, 2007
 10:30 a.m.
 Contact: Larry, AA1FS
LRHguy@earthlink.net
 508-991-6055





LOCAL NET ACTIVITY

Please support these local nets by checking in!

2-m Roundtable “Camel” Net is held *every evening* at 7 p.m. All are welcome to join in on the SEMARA Repeater, W1AEC, 147.000+ with a PL of 67.0 Hz.

6-m USB Net is held *Wednesdays* at 8:30 p.m. on 50.200 MHz. **Bob, N1HCW** (Acushnet) is net control. This informal net discusses everything from antennas to the weather and band openings.

10-m USB Net is held *Tuesdays* at 8:30 p.m. on 28.490 MHz. **Bob, N1HCW** (Acushnet) is net control. This informal net welcomes everyone, especially those new to HF. Experience the daily band openings.

3868 kHz SEMARA Morning Net is held *weekdays* from 7:30-8 a.m. Recent check-ins included **Whitey, K1VV** and **Randy, W1RTF**. All are welcome, especially those from outside the area.

SUDOKU

Here’s something to keep you busy while waiting for the 10-m net to start. **Solution is on page 7.**

5			6				1	
3			4				8	
			9		1		7	
	7			5	9			4
6	9			1				5
	4			7				8
		1	7		3			
		4				3		7
		6			8	9		

AMATEUR NEWS

QSO EFFICIENCY

ARRL Contest Rate Sheet for May 16, 2007

Edited by Ward Silver N0AX

Mark KO1U wrote to discuss sending his call extra times when operating QRP. It is suggested that he only send it extra times when the responding station gets the call wrong or asks for a repeat. For example,

N0AX: CQ Contest from N0AX

KO1U: KO1U

N0AX: KM1U you are 59 WA

KO1U: KO1U

N0AX: KO1U you are 59 WA

KO1U: Roger, you are 59 MA

N0AX: Thank you, QRZ Contest from N0AX

That keeps the amount of excess information to a minimum so that the rate for both stations is maximized.

Don't send your exchange back before the other station gets the call correct because sending your exchange is a tacit acknowledgement that no correction is needed.

And speaking of excess information, there is no need to add "/QRP" to your call sign in a contest, unless QRP stations count extra, and rarely even then. Adding the extra characters just makes it harder to copy your call correctly.

HOW BIG IS THAT SIGNAL, REALLY?

We all know that S-meters vary in sensitivity from rig to rig, but how much do they vary, really? Greg W8WWV decided he would find out! He measured the S-meter sensitivities and calibrations of eight different radios and posted the results for us to enjoy and ponder: <http://www.seed-solutions.com/gregordy/Amateur%20Radio/Experimentation/SMeterBlues.htm>

In case you're interested, the IARU recommendation is also online http://en.wikipedia.org/wiki/S_meter.

CARE FOR AN AMUSING PROJECT?

Take a look at the Strange Antenna Challenge: http://www.n0ew.org/k0s/k0s_2007/k0s_2007.php, sponsored by Erik N0EW and Dwayne WB5PLJ. I'm sure the creative minds of my readers will find this amusing and stimulating.

NEW HF OPERATORS - THINGS TO DO

ARRL Contest Rate Sheet for April 04, 2007

Edited by Ward Silver N0AX

Mark KD4D points to an excellent introductory-level Contesting FAQ just right for newcomers to HF contesting. http://www.qsl.net/zs1an/contesting_faq.html

Mark N7MQ recommends the introduction to contesting by Mark ON4WW - click on Operating Guide on first page of site. <http://www.on4ww.be/OperatingPracticeEnglish.html>. This should also point out just how "world-wide" the HF contesting community can be!

LOOK UP ELECTRONIC PARTS DATA

Jim N5SPE reminded me of this very useful Web site to look up data on electronic parts. Just type in your 'part number' and hit the Search button. Put that URL in your browser's Favorites list to save the day! <http://www.datasheetarchive.com>

TREES — Although counterintuitive, it is true that a tree gets taller by growing at its top, not by extending its trunk along its length. I.e. branches do not move farther apart as the tree grows. In addition, a tree grows thicker as it grows taller. Eventually anything attached to the trunk will eventually wind up inside the trunk. Many species of conifers will "bury" nails, fencing, forest service telephone wires, etc. within just a few years.

Food for thought as we eye those leafy antenna supports in our back yards. (Thanks, Don N8DE and Brent K7MEI)

QRP CONTESTING enthusiasts will be pleased to learn that there is a contest calendar just for them. Ken N2CQ publishes a QRP-specific calendar on the American QRP Club Web site. <http://www.amqrp.org/contesting/contesting.html>.

SCARBOROUGH REEF PHOTOS ..

Bob K1VV exclaims WOW !!!!!!!!!!!!!!!

Take a look at these!!!

<http://www.scarboroughreef.com/4rocks.html>.

SEMARA NEWS

TAKING A VACATION?

With the technology the way it is today we can very easily take our Amateur Radio along with us while on vacation. Of course most of us will have 2 meters and 70 centimeters in our vehicles for getting road conditions, directions, and making new friends along the way. Many of us may want to do more. Some of us may even leave our stations at home and work them via remote control from wherever we may happen to be using our laptop computer on our vacations. Thinking about doing this? Check out the April, 2007 QST for more information on the details.

Gosh! How about a mini DXpedition to some otherwise not used much location. For the county hunters it maybe something as simple as pulling off the road and making some contacts from a county that not many people operate from.

For Island hunters it could be some island you boat to while on that well sought after summer vacation. Check this out a head of time though because you may need to get permission to operate from some of the island locations.

Ah! Yes! Then there are those who might like to operate from that dry-docked ship's radio room. there are a few around that actually have Amateur Radio Clubs keeping the radio rooms on the air on the ham bands.

Don't forget the power of one either. You may be the only one in a certain town's summer festival and might have the opportunity to put a special events station on the air just for that celebration.

Maybe you're a railroad fan and are taking an old style train trip across the country. What better place to set up a station and talk to hams as you chuga chuga choo choo along the country side listening to the clackdick of the wheels on the track.

Then there are the real outdoors people in their canoes or backpacking out in the wilds. That QRP rig with a couple of batteries doesn't weigh too much and a dipole antenna all rolled up doesn't take up much space in the pack either. Sitting by a crackling campfire in the dark of night out in the middle of the woods operating a little QRP CW can be kind of neat way to spend the evening while relaxing after all that paddling or walking.

*73 & DX from KOHLA, Avery
Handiham E-Newsletter*

(Continued from page 1 - Field Day)

Here's a check list of sorts.

- 100% Emergency Power
- Media Publicity: Send a press release to the Standard-Times or Channel 6
- Public Location?
- Public Information Table with handouts about Ham Radio
- Message Origination to Section Manager: A single NTS message is worth 100 points
- Message Handling: 10 points each up to 100 points max
- Satellite QSO?
- Alternate Power - solar panel and a battery?
- W1AW Bulletin: 100 points for copying the special bulletin
- Non-Traditional Mode Demonstrations: APRS etc.
- Site Visitation by an elected governmental Site Visitation by a representative of an agency GOTA Station (Get On The Air)
- Web submission of Field Day log
- Field Day Youth Participation

Check out the ARRL Field Day Rules at

<http://www.arrl.org/contests/rules/2007/fd.html>.

THANKS TO WAYNE, WA1CCM



Have you seen the new signs? They really set SEMARA off from the ordinary! This is the replacement street sign.

~Bob, K1KVV



MEETING MINUTES



May 3, 2007

Call to order:

by **Louis-W1CH** at 7:03 PM.

Roll Call:

Members present – 45,
Guests present – 1 guest.

Secretaries Report: (**Armand-W1BUG** was absent) A **motion to accept as posted on the website** passed unanimously.

Treasurer's Report: **Mike-KB1NB** read the report. A motion to refer to audit passed unanimously.

Standing Committees

Building and Grounds: **Mike- N1ITQ** reported that it is time to start cutting grass. He had a successful soda run – we are now overflowing with soda!

Technical Committee: **Dave-W1DJG** reported that the remnants of the R5 vertical antenna and the pole need to be taken down – possibly when the Quonset hut is razed.

Scholarship Committee: No one present to report.

Special Committees

ARES/Skywarn: **Rob-KD1CY** reported that the P3 Hurricane Hunter aircraft was a success. A good time was had by all. A Skywarn education and training session is Thursday, June 14 at the Acushnet Community Center from 7-10 PM. Next MMRA exercise is on Monday, May 7, between 7 and 9 PM. The Fairhaven 145.490 repeater may be linked. RACES exercise before the exercise on the Taunton repeater, 147.135, PL 67.0.

Communications: **Bob-K1KVV** reported sending a letter to Al Costello (Network Wireless Facilities, Inc.) about reinstalling the protective fence around the perimeter of the leased tower area for security and liability purposes.

Ratification of New Applicants: One application was received.

Donald Rosinha II – WA1BXY

A **motion to accept** passed unanimously.

Presidents Comments: none.

Old Business:

The broken keyer will be auctioned immediately after the meeting.

New Business:

Henry-W1GYL made a motion to have a 440 repeater in the club that passed 22 to 12.

Dave-K1JGV called for a vote to show preference for either **Option A** or **Option B**.

Option A Raze present structures and erect a 48' x 48' metal building in its place. Estimated total cost is \$60,000, including removal, slab, permits and the like.

Carl-K1KID reported that he has a quote of \$48,000 for just the building.

Option B Raze the Quonset hut and erect a 20' x 20' wood radio shack. Estimated total cost is \$33,000, including removal, slab, permits and the like.

Note – the (objective) inspection of the present building, which cost us \$350, states the building is 95% good. It needs some work, such as new roof, gutters, vents and such, for an estimated cost of \$15,000.

The members voted their preference by a show of hands. **Option A** = 5 and **Option B** = 22.

The New Building Committee will proceed with **Option B**.

For the Good of the Club:

Chuck-KD1DA reminded everyone that holding Field Day off the grounds requires lead time to get the needed permits.

Rob-KD1CY remarked that tonight's meeting showed how much progress we are making and are moving forward.

Dave-K1JGV wished to recognize **Rob-KD1CY** for his efforts in suggesting the path taken by the New Building Committee.

Nominations for Board of Trustee Vacancy:

John-WA1ESO withdrew his name before the meeting.

Two were nominated before the May meeting began. A written ballot was cast with the following results:

Charley Days-WA1JFD	10
Ed Duclos-WA1ZCB	22
Write-in	<u>1</u>
Total votes cast	<u>33</u>

Ed-WA1ZCB will serve out the remainder of Bill Miller's term as Trustee (2007).

Meeting Adjourned at 8:20 PM.

Respectively Submitted
Bob-K1KVV, Secretary Pro Tem



JUNE VE SESSIONS

Walk-ins permitted unless otherwise noted.

<http://www.arrl.org/arrlvec/examsearch.phtml>

- SEMARA Clubhouse — 10:30 a.m. 2 June
 Larry Houbre-AA1FS
LRHguy@earthlink.net
 508-991-6055

- Braintree, MA — 8:45 a.m. none
 William Needham-K1WN
K1WN@aol.com
 781-843-4000

- Canton, MA — 7:30 p.m. 21 June
 Lou Harris-N1UEC
N1UEC@Norwood-ARC.org
 508-668-0858

- Cranston, RI — 9:00 a.m. 23 June
 Ken Carr-KB1AWV
KB1AWV@arrl.net
 401-828-1665

- Fall River, MA — 7:00 p.m. 18 June
 Skip Denault-KB1CNB
skip@NewTestamentSchool.org
 774-644-3469

- Falmouth, MA — 9:00 a.m. 9 June
 Ben Fleck-W2LYE
BenFleck@cape.com
 508-540-2583

- Middletown, RI — 9:00 a.m. 9 June
 Jack Garforth-K1IG
K1IG@verizon.net
 401-683-2250

- Providence, RI — 7:00 p.m. 14 June
 Lou Mester-W1CH
W1CH@cox.net
 401-263-6045

- Slatersville, RI — 9:00 a.m. none
 Robert Jones-WB1P
WB1P@arrl.net
 401-333-4787

NE FLEA MARKETS

<http://www.arrl.org/hamfests.html>

1. Hampden Cty Radio Assn Feeding Hills, MA
 David — 413-596-6605
2. Pine State ARC Hermon, ME
 Roger — 207-848-3846
3. Newington ARL Newington, CT
 George — 860-289-1445
16. Southern Berkshire ARC Goshen, CT
 Lee — 860-435-0051
17. Flea @ MIT Cambridge, MA
 Nick — 617-253-3776

SOME JUNE CONTESTS

<http://www.arrl.org/contests/>

Look Around in the Field Contest – CW/SSB 1600Z-2200Z Jun 2. Information: <http://mysite.verizon.net/vze7v384/nj2om/index.html>.

ARRL June VHF QSO Party – from 1800Z Jun 9-0300Z Jun 11 (see May QST, p 102 or <http://www.arrl.org/contests>).

Portugal Day Contest – SSB 0000Z-2400Z Jun 9. Information: http://www.rep.pt/pdf/contest_portugalday.pdf.

Kids Day Operating Event – 1800Z-2400Z Jun 16 (see <http://www.arrl.org/FandES/ead/kd-rules.html>).

SMIRK QSO Party – CW/Phone 0000Z Jun 16-2400Z Jun 17. 6 meters only. No repeater QSOs. Information: <http://www.smirk.org>.

ARRL Field Day – 1800Z Jun 23-2100Z Jun 24 (see May QST, page 98 or <http://www.arrl.org/contests>).

1	2	9	8	4	5	6	3	7
7	5	3	2	9	1	4	8	6
6	4	8	3	9	7	1	5	2
8	9	2	6	7	3	5	4	1
5	3	7	4	1	8	2	9	6
4	6	1	9	5	2	3	7	8
2	7	5	1	3	9	8	6	4
9	8	6	5	2	4	7	1	3
3	1	4	7	8	6	9	2	5

B. An overmodulated signal is distorted and difficult to understand. This can cause a signal with excessive bandwidth that gives interference to nearby signals - splatter. Setting the microphone gain control too high or overprocessing the signal with a speech processor can cause overmodulation. Set it so there is a slight movement of the ALC meter on modulation peaks.

SEMARA HandiHam Affiliate

Southeastern Massachusetts Amateur Radio Association, Inc., 54 Donald Street, South Dartmouth, MA 02748

LOCAL REPEATER DIRECTORY

See <http://www.semara.org/repeaters.htm>

Frequency	CTCSS	Call	Location
144			
145.110 -	67.0	KB1BWN	New Bedford
145.130 -	151.4	WF1A	W Greenwich, RI
145.150 -	123.0	WA1DGW	Fall River
145.450 -	100.0	W1SYE	Portsmouth, RI
145.490 -	67.0 ¹	W1SMA	Fairhaven
146.655 -	88.5	WA1GPO	Falmouth
146.685 -		N1ZIZ	Plymouth
146.700 -		K1CR	Cranston, RI
146.730 -	67.0	W1SGL	Sandwich
146.760 -		W1HQV	Scituate, RI
146.805 -	67.0	NN1D	Fall River
146.835 -	192.8	WA1QCA	Johnston, RI
146.880 -	100.0	WC1R	Newport, RI
146.940 -		K1KYI	Lincoln, RI
146.955 -	88.5	K1PBO	Dennis
147.000+ SEMARA	67.0*	W1AEC	Dartmouth
147.045+	141.3	W1HDN	W Warwick, RI
147.120+	173.8	K1WEW	Portsmouth, RI
147.135+	67.0	KA1GG	Taunton
147.165+	67.0	WA1HAH	Exeter, RI
147.180+	67.0	W1MV	Bridgewater
147.195+	127.3	K1SMH	Attleboro
147.315+	67.0	WG1U	Plymouth
147.330+	173.8 ²	W1AQ	E. Prov., RI
147.345+	88.5	KB1QL	Vineyard

* IRLP-4347 & E-Link-44347

¹IRLP-4617 & E-Link-4611; ²required for use of IRLP-4907

440

441.350+	103.5	KA1RCI	Providence, RI
442.200+	88.5	KE1AK	Fall River
442.350+	67.0	WG1U	Plymouth
442.950+	82.5 ⁵	K1RK	Barnstable
443.450+	88.5	K1MYL	Westport
443.500+	141.3 ⁵	K1PBO	Dennis
443.750+	118.8	N1YHS	Bourne
443.800+	88.5 ³	W1SMA*	Dartmouth
443.850+	141.3	AA1PL	Exeter, RI
444.250+	141.3 ⁵	WA1GPO	Falmouth
444.350+	88.5	W1ACT	Fall River
444.550+	88.5	W1MV	Bridgewater
447.025 -	77.0 ⁴	N1JBC	Johnston, RI
447.075 -	88.5	N1DZD	Kingston
449.175 -	100	N1RMH	Plymouth
449.275 -	DPL 244	W1WNS	W. Bridgewater

³IRLP-4259 & E-Link-4259; ⁴IRLP-5920 & E-Link-55920; ⁵ Cape Net
* OFF THE AIR

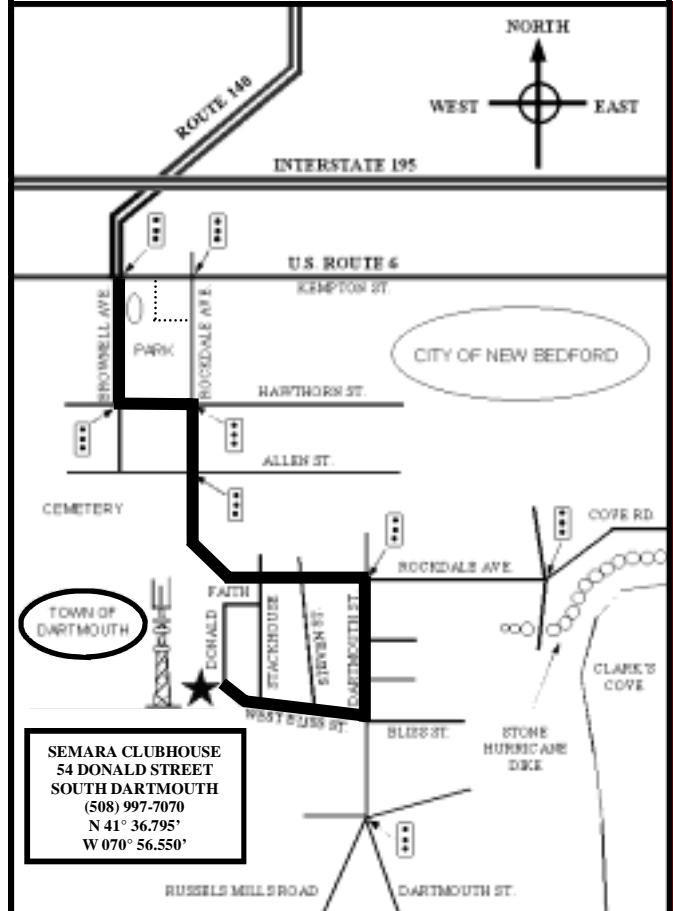
FISTS CW no.10555

Grid Coordinates: **FN41mo**

GPS Coordinates:

Lat. N 41° 36.795' Long. W 070° 56.550'

Directions to SEMARA



Business Meeting: 7 PM first Thursday of month

Ragchew at the clubhouse: 7-11 AM Sundays

MOST-OF-THE-TIME ACITIVITIES

EARLY BIRD BREAKFAST: 6 AM T & TH

The Symposium

851 Mount Pleasant Street, New Bedford

CLUB COFFEE MEET: 1 PM WEEKDAYS

Boston Coffee & Bagel

122 Allen Street (corner of Dartmouth Street)
New Bedford

LUNCHEON: 11:30 AM FRIDAY

Meet at the clubhouse at 11:15 AM to decide which local restaurant is to have the honor of our presence that week